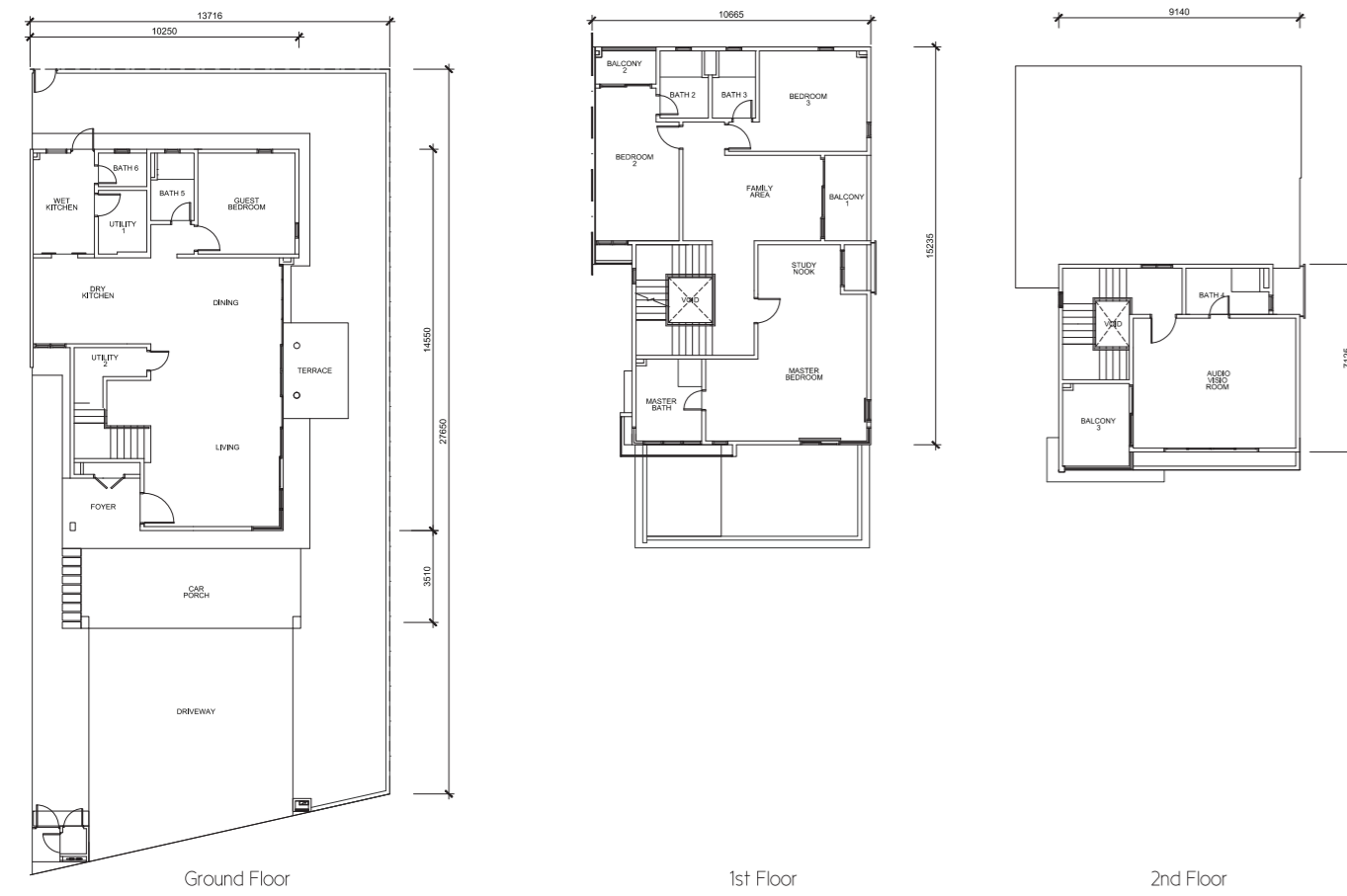


LINK BUNGALOW FLOOR PLANS

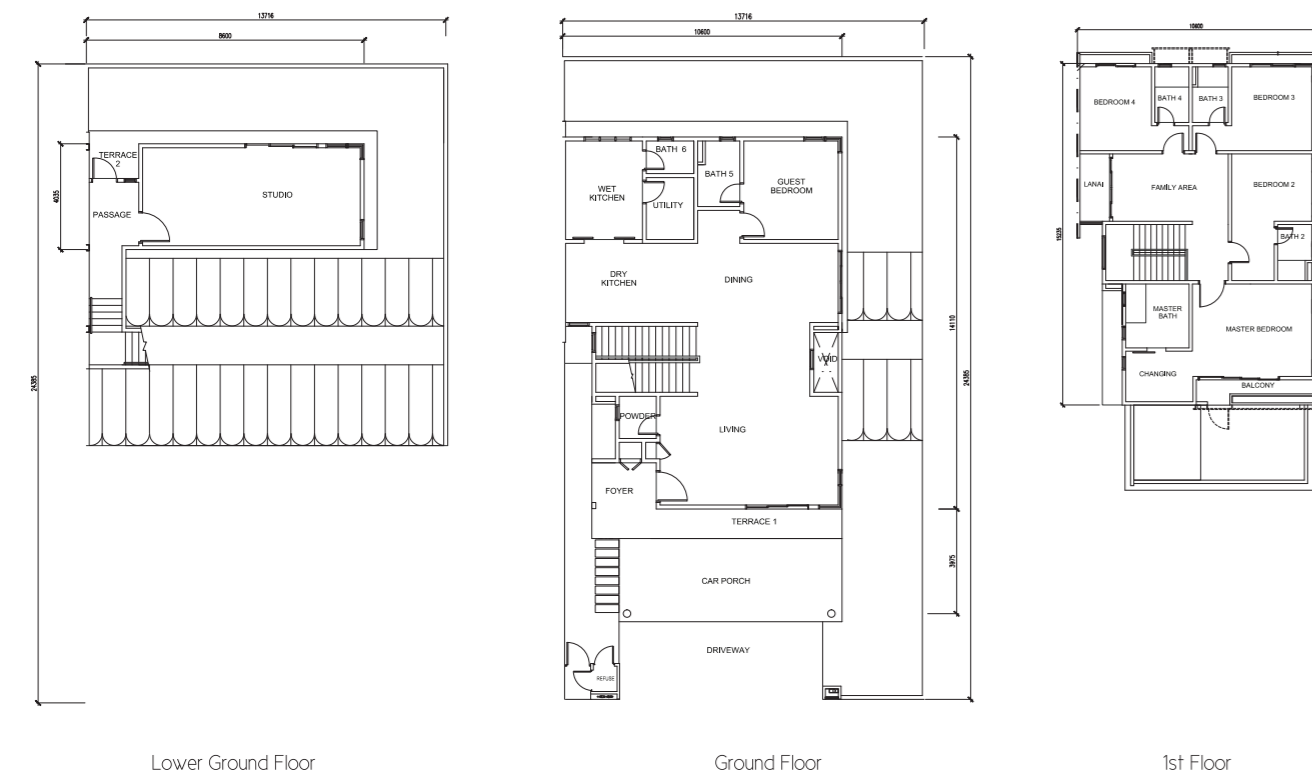
Type E

Built-up Area: 4,168 sq.ft. | 5+1 Bedrooms

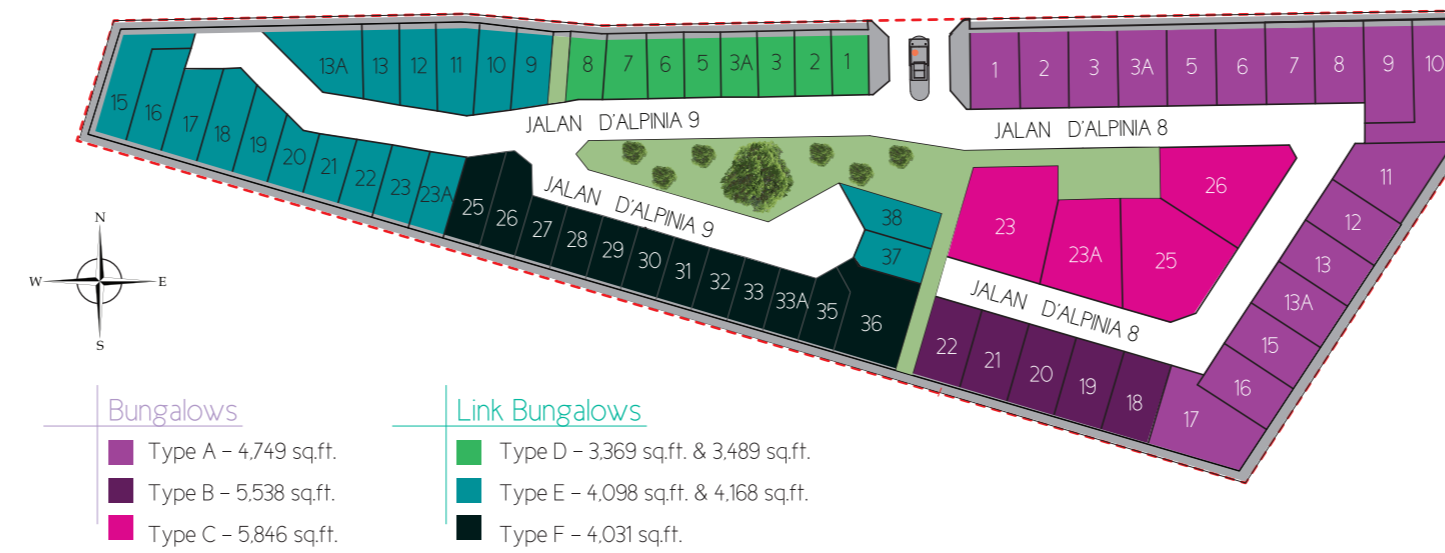


Type F

Built-up Area: 4,031 sq.ft. | 6+1 Bedrooms



Site Plan



- | | |
|-----------------------|--------------------------------------|
| Bungalows | Link Bungalows |
| Type A - 4,749 sq.ft. | Type D - 3,369 sq.ft. & 3,489 sq.ft. |
| Type B - 5,538 sq.ft. | Type E - 4,098 sq.ft. & 4,168 sq.ft. |
| Type C - 5,846 sq.ft. | Type F - 4,031 sq.ft. |

Location Map



GPS Coordinates:
N 2°58'42.4668", E 101°39'14.3202"



For enquiries, please call our Sales Gallery
© 03-8958 0880 | 03-8958 0883 | Email: info@hapsengland.com

Developer: Hap Seng Land Development (Puchong) Sdn. Bhd., Office: 19th Floor, Menara Hap Seng, Letter Box No. 81, Jalan P. Ramlee, 50250 Kuala Lumpur
Sales Gallery: D'Alpinia Home Gallery, Persiaran D'Alpinia, Taman D'Alpinia, 47120 Puchong, Selangor.
Disclaimer: The information contained herein is subject to change and cannot form part of an offer or contract. All renderings are artist's impression only. All measurements are approximate. While every reasonable care has been taken in preparing this visual, the developer cannot be held responsible for any inaccuracy. All the above items are subject to variations, modifications and substitutions as may be required by the Authorities or recommended by the Architect or Engineer. *After 7% bumper discount.



Urbana

@ D' ALPINIA

Modernity . Stature . Home

Exclusive Bungalows & Link Bungalows

A Residence That Reflects Your Achievements

You've made it in your career, and are now reaping the rewards of your hard work. Urbana @ D'Alpinia is a symbol of your achievements, while at the same time it's also an expression of your understated yet premier taste, and belief that flamboyance isn't everything.

Established surroundings and a prime location in Klang Valley's Southern Golden Triangle provide an immediate, further appeal to Urbana. Enjoy seamless accessibility around the city via major highways including the LDP, SKVE, MEX and Seremban Highway.

All that's left is for you to move in.



Premier Features & Facilities

Based on the Build-Then-Sell approach, these exclusive homes completed with CCC will feature the following:

- Guarded Environment
- Comprehensive Security Features
- Spacious Front Yard Garden
- Fully Fitted Kitchen Cabinet with Appliances
- Air-conditioning in Living, Dining & All Bedrooms
- Solar Water Heater & Water Filtering System
- Bathroom Fittings & Accessories
- Autogate System

A Class Above

These bungalow homes offer generous spaces while retaining your privacy. Wide living areas and rooms exude a sense of grandeur that complements the tasteful and premier characteristics of these bungalow homes.

- Modern architecture fused with traditional home designs
- Large glass windows allowing ample amounts of natural lighting
- Generous garden exteriors

2 ½-Storey Bungalows
Built-up Area:
4,749 sq.ft. - 5,846 sq.ft.



An Expression of Individuality

Generously proportioned and built with versatile space – Urbana's collection of Link Bungalow homes are a response to a highly sought-after type of residence.

- Modern contemporary architecture
- Wide entranceways extending a grand welcome
- Generous balcony areas ideal as alfresco gathering spaces

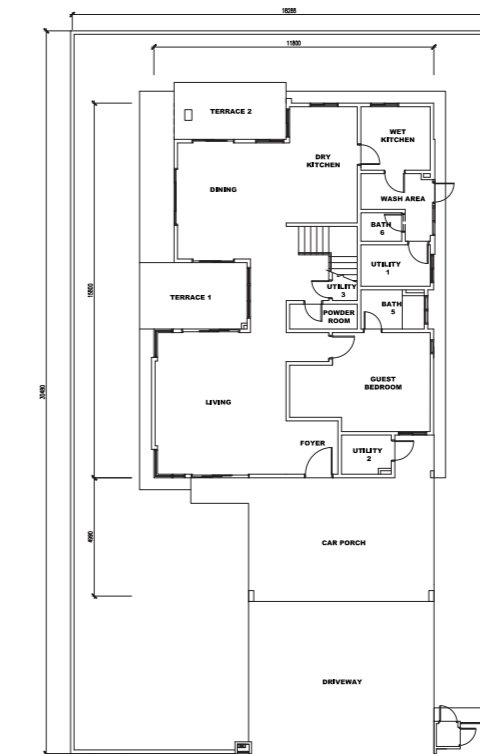
2 & 2 ½-Storey Link Bungalows
Built-up Area:
3,369 sq.ft. - 4,168 sq.ft.



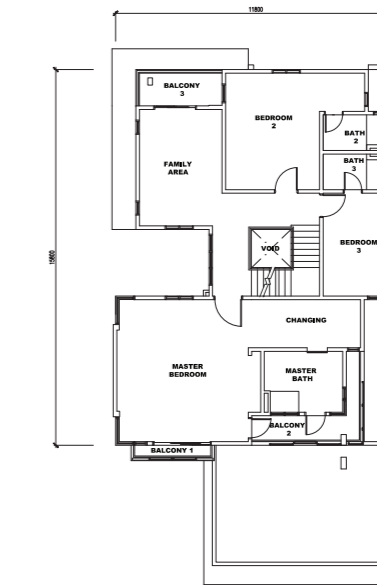
BUNGALOW FLOOR PLANS

Type A

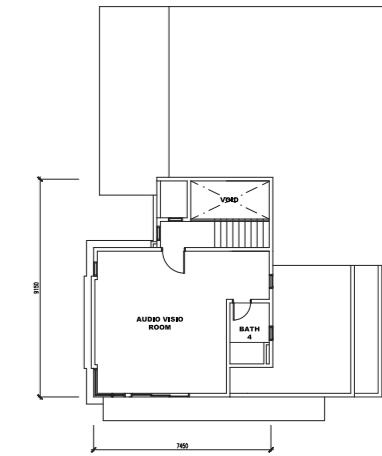
Built-up Area: 4,749 sq.ft. | 5+1 Bedrooms



Ground Floor



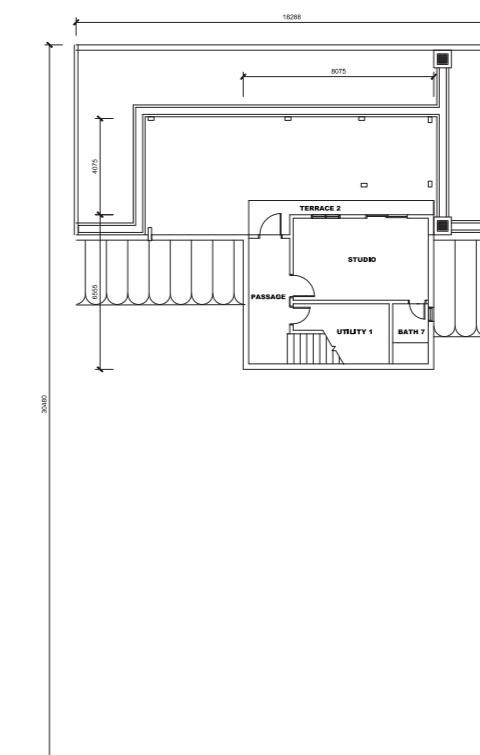
1st Floor



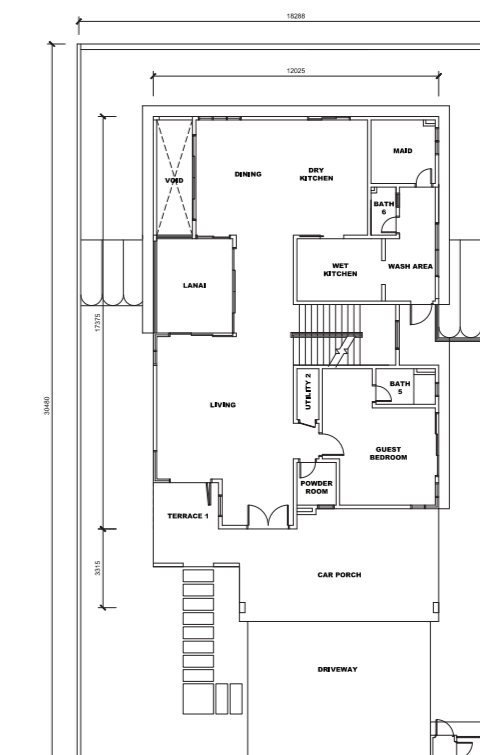
2nd Floor

Type B

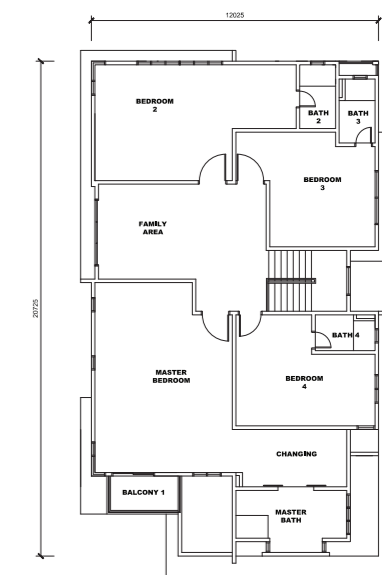
Built-up Area: 5,538 sq.ft. | 5+1 Bedrooms



Lower Ground Floor



Ground Floor



1st Floor