

THE
LANDMARK



The Landmark, conceptualized and developed by Katana Developments and to be marketed by BSG Property is an enticing project that will introduce a whole new concept lifestyle to discerning residents in Penang. Each of these entities are renowned for having made their mark in the industry and are associated with iconic projects that set and raise the standards of living.

Embracing the philosophy of creating designer living, Katana Developments is a Singapore-based property developer that aspires to conceptualize unique housing solutions in the region. They are driven by the vision of introducing innovative and artistic residential and commercial projects that illustrate their passion for redefining the way people live. Focused on style, grace and elegance, it is Katana's goals to raise the bar of excellence in the markets they invest in. Katana Developments' success and commitment is defined by a two-tiered branding strategy via Katana and K.

BSG Property, a well-respected organisation with diversified interests in various industries was especially chosen to play the pivotal role of marketing The Landmark for its niche expertise in the Northern region and excellent reputation in the property industry. With the dynamic collaboration of both these entities, The Landmark is destined to create a trendsetting impact in the property market.





ABOUT PENANG

Penang Island truly has it all... glorious beaches, cool hilltops, a multi-racial population, cultural heritage status, thriving industries and a splendid spread of food that is world famous.

A popular destination among expatriates who choose to set up their holiday and retirement homes here, Penang is a fusion of old-world charm, new age influences and cosmopolitan lifestyles. Thus, it is no wonder Penang attained international recognition when Georgetown was voted as one of the best cities in Asia by Asiaweek and ranked as the 9th most liveable city in Asia. Yet another distinction that draws people from all over the world to Penang is its UNESCO World Heritage Site status for having unique architectural and cultural townscape without parallel anywhere in East Asia and Southeast Asia.





STUNNING SCULPTURE

A spectacular development is taking shape along the shores of Penang Island. Rising sublimely like undulating waves in the air, The Landmark is destined to become a trendsetting silhouette to grace the island's skyline with its statuesque elegance and every facade adorned with lush greenery whispers fresh promises.

LAVISH LIFESTYLE

Conceptualized to be adorned with abundant foliage and plants that shift the outlook of its exterior appearance from time to time and season to season. Every floor's design has been artfully designed to be different and project a distinctly unique outlook to reflect exclusive individuality.

Like A Living Sculpture, The Organic Facade Of The Landmark Will Be A Captivating Sight From All Perspectives



ENTICING SANCTUARY

What makes The Landmark truly unique is its lush landscape that isn't confined to just a few designated areas. The whole building is innovatively fused with flora and fauna, giving residents the experience of living in nature's hush and lush embrace.

Surrounded By Lush Greenery







Cabana Villas - Where You Can Lounge In Total Relaxation



ANIMATED ARTISTRY

The Landmark you see today may very well look different tomorrow simply because it is landscaped with abundant greenery that shifts the outlook of its exterior appearance from time to time. This feature which harnesses the living beauty of nature, makes The Landmark an organic development that comes alive before your eyes.



From The Privacy Of Your Balcony, Feast Your Eyes On Breathtaking Views Of The Gurney Drive And Penang Skyline



EXQUISITE DESIGN

Like a masterpiece that captivates the mind and moves the spirit, the design and layout of each unit places great emphasis on comfort and modern architecture. This tranquil hideaway in the sky will exceed even your highest expectations with its exquisite details and elegance. The living spaces are openly spacious, the interiors are luxuriously finished and the flowing layouts offer an open invitation to delight the senses.

INFINITE PLEASURES

Let the stress of your busy lifestyle melt away in the olympic sized infinity pool that gives you a magnificent and unobstructed view of the whole stretch of Gurney Drive. After an invigorating lap in the pool, you can choose to chill in floating aqua furniture, soak up the sun or retreat into the Cabana Villas to just relax in leisure while contemplating the reflective water features.





Take A Refreshing Dip In The Vast Olympic Sized Designer Infinity Pool



Contemporary Corporate Suites That Define Extraordinary Status



AWESOME AMBIENCE

There is something to suit every discerning taste. With a variety of units to choose from, you will be spoiled for choice. Each corporate suite is designed to reflect the owner's extraordinary status.

INVIGORATING PURSUITS

Need a boost of energy to revitalize your body? Head to the Equinox - Club Floor Wellness Zone to work up a sweat or take a cool dip in the Infinity Pool that will take you to the edge of sublime relaxation and luxury. While you're at it, kids can have a splashing time in their very own play pool or playground. The fun doesn't stop there, a Fun Pool complete with float-on-pool furniture is also provided where you can just soak to your heart's content.





Equinox - Enjoy The Pleasures Of Working Out Surrounded By Greenery

EXCLUSIVE PRIVILEGES

Soothe your senses and wrap yourself in sheer luxury as you relax in one of our many lounges, a sanctuary for relaxation and rejuvenation of the mind and soul. The most spectacular one would be the Sky Lounge, where you can feast your eyes on the glorious vistas of the sea and Gurney Drive while sipping your favourite drink. Stretching from one end to the other, it literally puts you on top of the world and in the lap of luxury. For the privilege and convenience of owners, a Boutique F&B alcove is set aside for private dining and entertaining. Here, you can show off your culinary skills at Penang's first Private Sky Dining Kitchen.

Private Sky Dining Kitchen - Exclusively Yours For Hosting Private Parties And Functions







FABULOUS FACILITIES

In keeping with our concept of creating a lifestyle-driven place, The Landmark features a haven of facilities dedicated to indulge every whim & fancy on every level. Here are some of the unexpected delights that are expected to charm and fascinate:

Olympic Sized Infinity Pool

Let your cares and stress float away as you take a leisurely dip or refreshing swim in the vast Olympic Sized Infinity Plunge Pool.

Fully Equipped Glass Box Sky Gym

Working out becomes that much more fun and invigorating when you do it in our Fully Equipped Glass Box Sky Gym that rewards you with a stunning view.

Yoga And Pilates Health Deck

Push your body to the limit as you stretch and work up a sweat on our dedicated Yoga And Pilates Health Deck without any other distractions.

Private Sky Dining Kitchen

This is where you get to show off your culinary skills to your guests as you whip up delightful dishes in the Private Sky Dining Kitchen.

Sky Observatory Deck

Feast your eyes on the breathtaking vistas from the Sky Observatory Deck that will make you feel like you're literally on top of the world.

Private Urban Lounges

When you want to spend some quality time chilling with friends or a few close peers, all you have to do is hop over to the Private Urban Lounges.

Dedicated Secured Access Concierge Lobby

Your peace of mind is assured knowing that we have in place a Dedicated Secured Access Concierge Lobby that is state-of-the-art.

Children's Play Pool

Watching the kids having a splashing time in the Children's Play Pool is what gives parents ultimate satisfaction.

Children's Play Facilities

Kids want to have fun too and the Children's Play Facilities are where parents can ensure they do while they take a breather of their own.

Designer Landscapes

Not all landscapes are created equal and the Designer Landscapes at The Landmark are stunning examples of green masterpieces.

Uber Glass Function Room

Planning an event? Look no further than the Uber Function Room to delight your guests not only with the function but also with an ambience that is just as astounding.

Iconic Organic Green Walls

The Iconic Organic Green Walls at The Landmark are not only visually stunning to look at but they also enliven the spaces with their living artistry.

Oriental Courtyard

The Oriental Courtyard adds a touch of traditional outlook that is authentic and mesmerizing at the same time.

Environment Lawns

Meticulously manicured, the Environmental Lawns are a refreshing sight to behold and blissful to stroll around in.

BBQ Function Pads

The BBQ Function Pads are where you can turn on the heat with some sizzling fun among friends and family members.

Cabana Villas

When you're relaxing in one of the Cabana Villas you will feel like you're cradled in the lap of luxury in an exotic resort.

Reflective Water Features

You'll be mesmerized by the reflective water features that are designed as refreshing art forms that enliven the atmosphere around The Landmark.



The Epicurean @ The Landmark - Where You Can Whet Your Appetite With A Gastronomical Spread Of Classy Dining That Meets Your Every Fancy And Desire.



SENSATIONAL EXPERIENCES

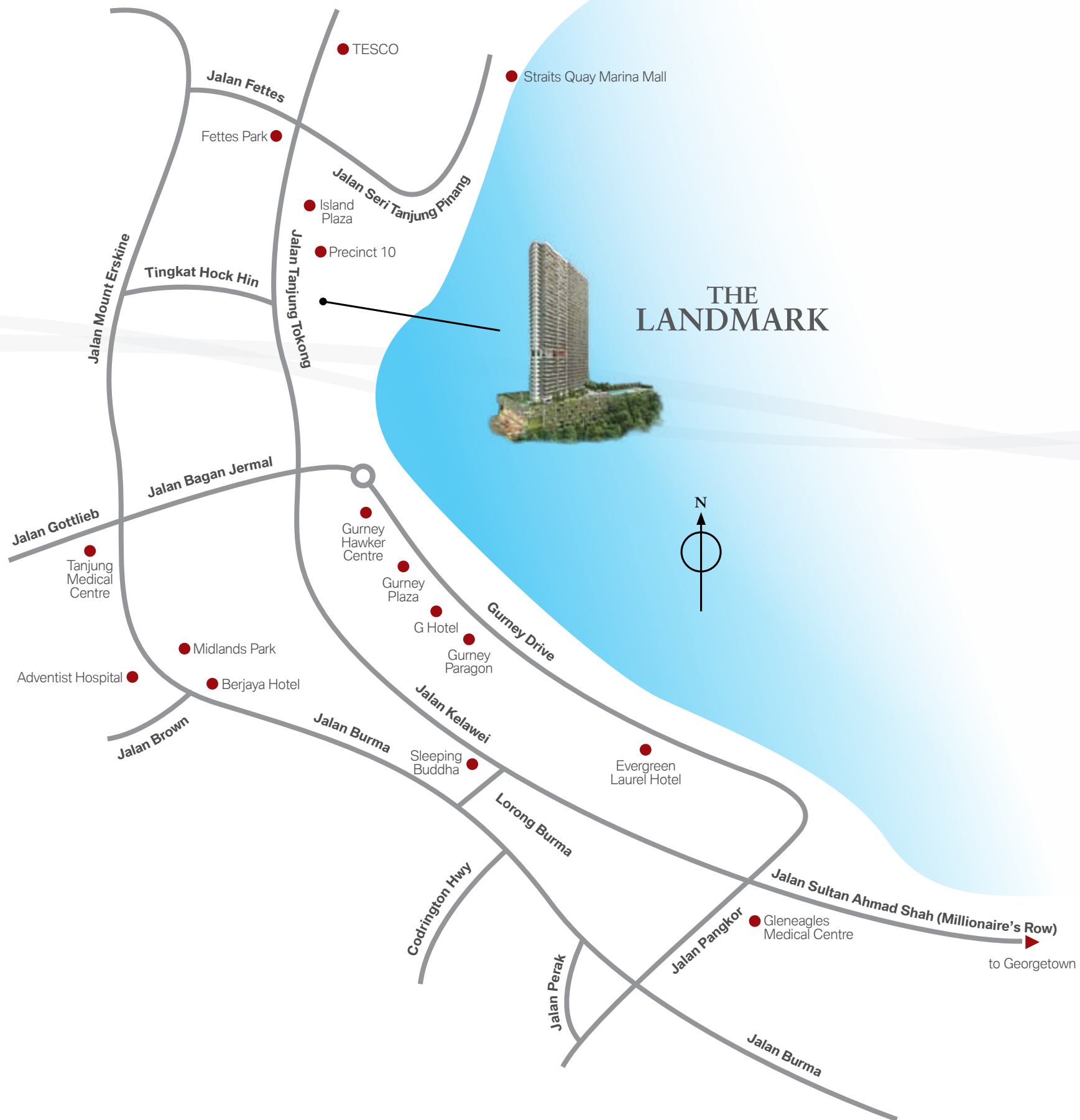
If you feel like mingling with the public and people watch, head down to The Epicurean @ The Landmark, the F&B Belt that is designed in harmonious fusion to make your dining experience that much more delightful. Open to the public, The Epicurean @ The Landmark is spacious with soaring ceilings, luxuriant landscaping and comprises of fine dining restaurants, bistros, fast food outlets, concept eateries such as ice-cream parlours, coffee joints, gourmet cake shops, butchers and grocers etc that are meant to satisfy your exquisite palate.



An Ambience Worth A Thousand Experiences Where Cool Meets Warmth And Style Meets Sophistication.



The F&B Lofts At The Epicurean Features An Al-fresco Dining Internal Oriental Courtyard

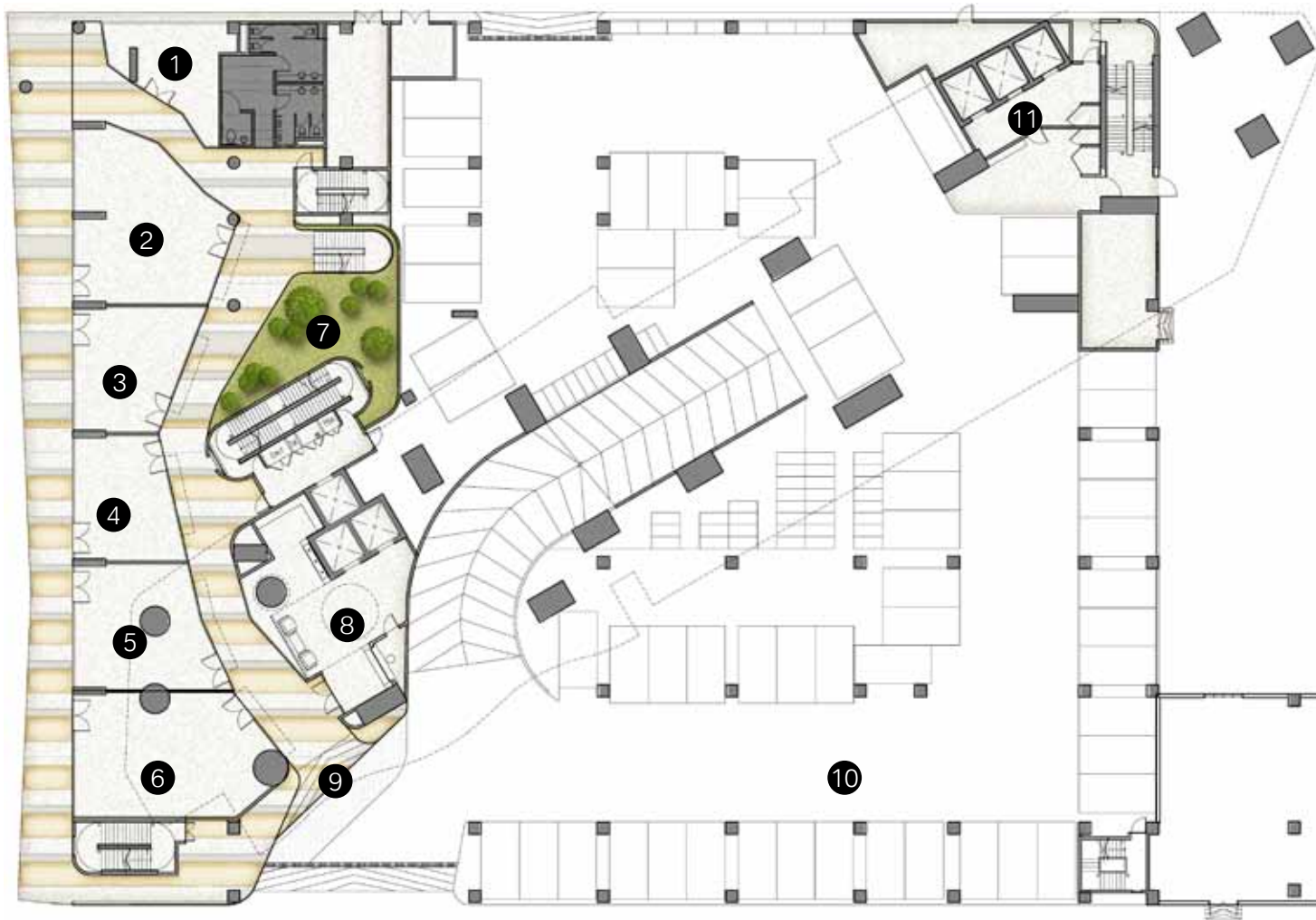


STRATEGIC SURROUNDINGS

Feel the pulse of excitement that surrounds The Landmark. Located in the heart of Tanjung Tokong, you get to enjoy all that life has to offer... iconic shopping havens, fancy dining at high-profile restaurants, Gurney Drive's world-famous local eateries... and so much more.



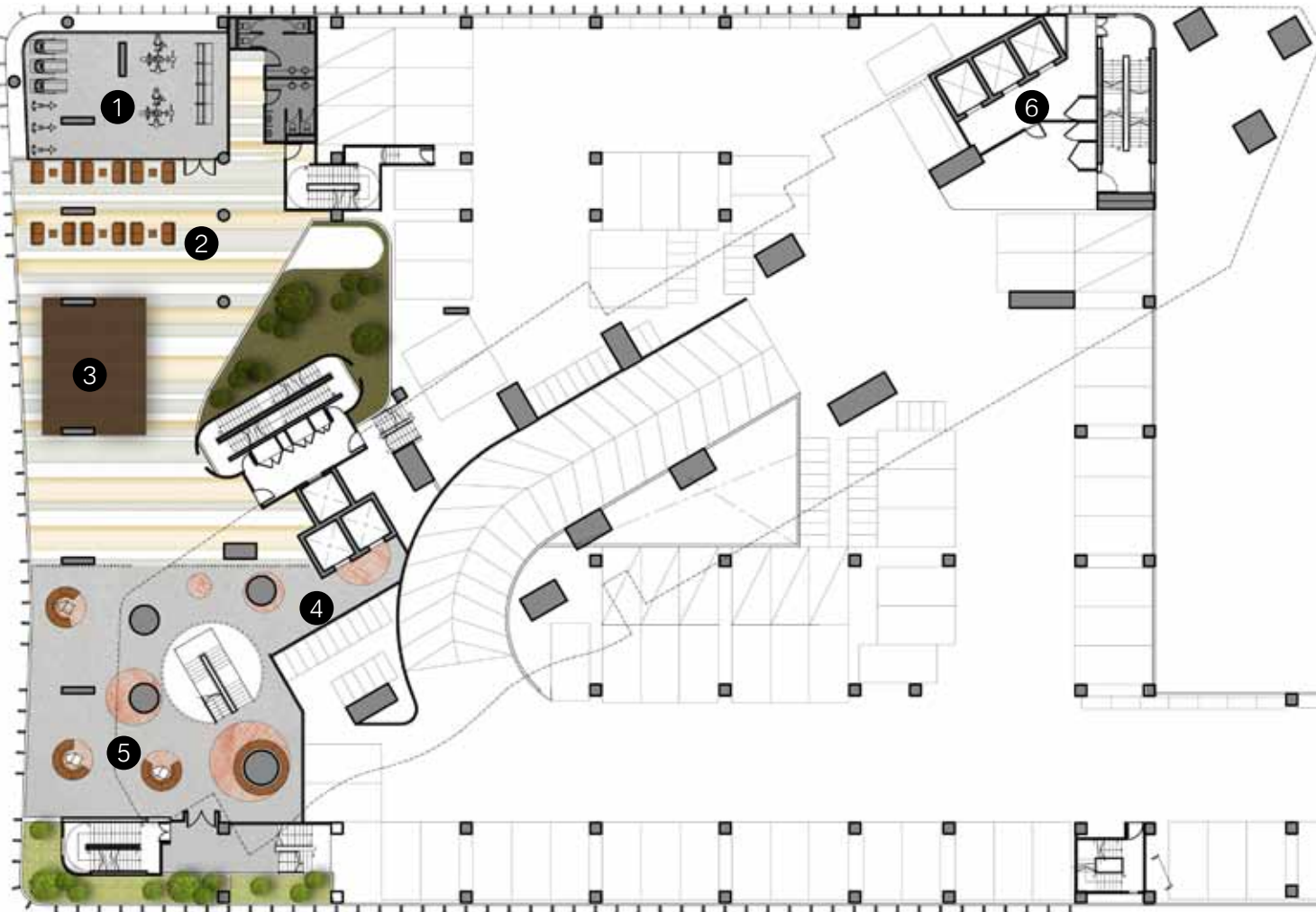
First Floor Plan



The Epicurean @ The Landmark

- 1-6. Retail / F&B
- 7. Lawn / Oriental Courtyard
- 8. Secured Residential Lift Lobby (For Condominium Only)
- 9. Drop Off Porch
- 10. Car Park
- 11. Secured Corporate Suites Lift Lobby

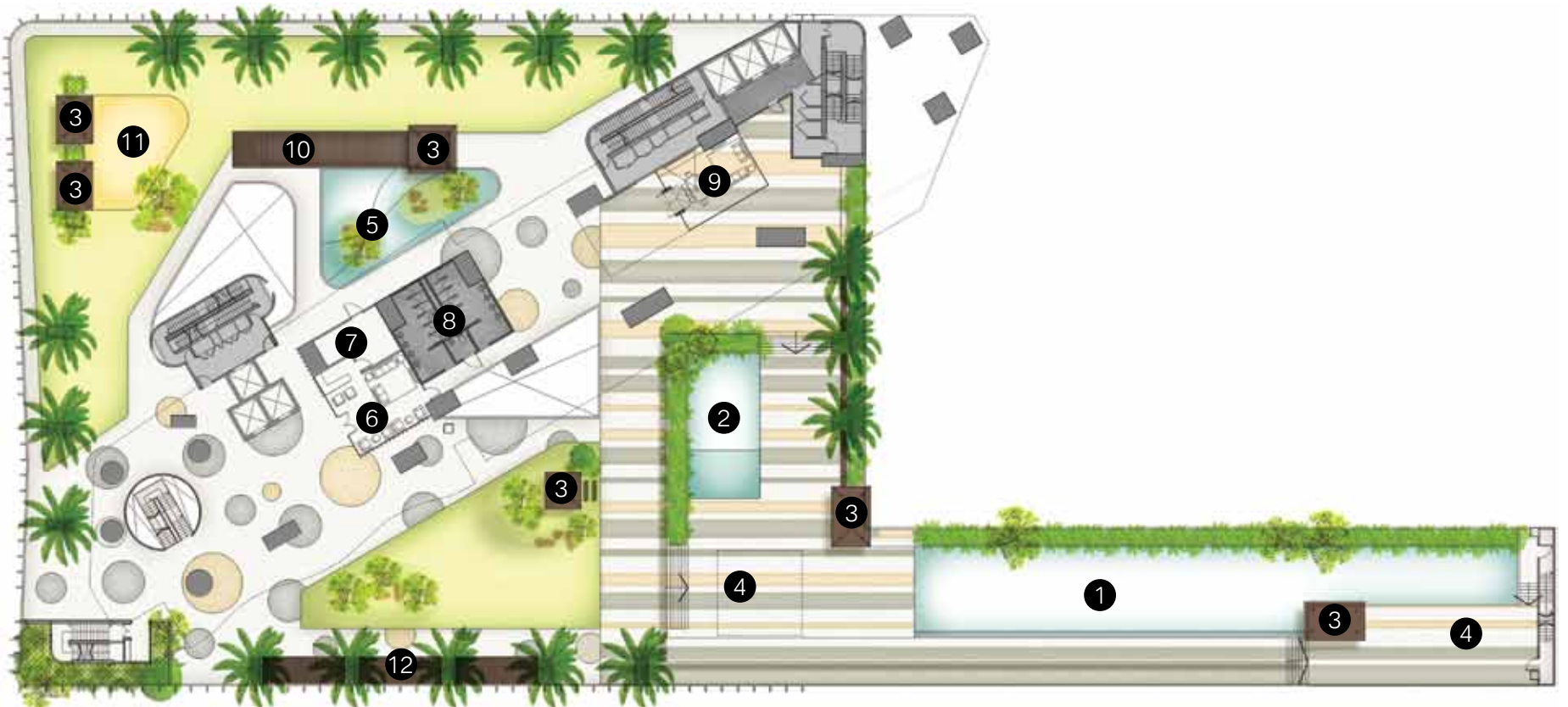
Fourth Floor Plan



Club Floor Wellness Zone

1. Glass Box Gym
2. Private Lounge
3. Yoga And Pilates Health Deck
4. Residential Lift Lobby (For Condomonium Only)
5. Private Urban Lounge
6. Secured Corporate Suites Lift Lobby

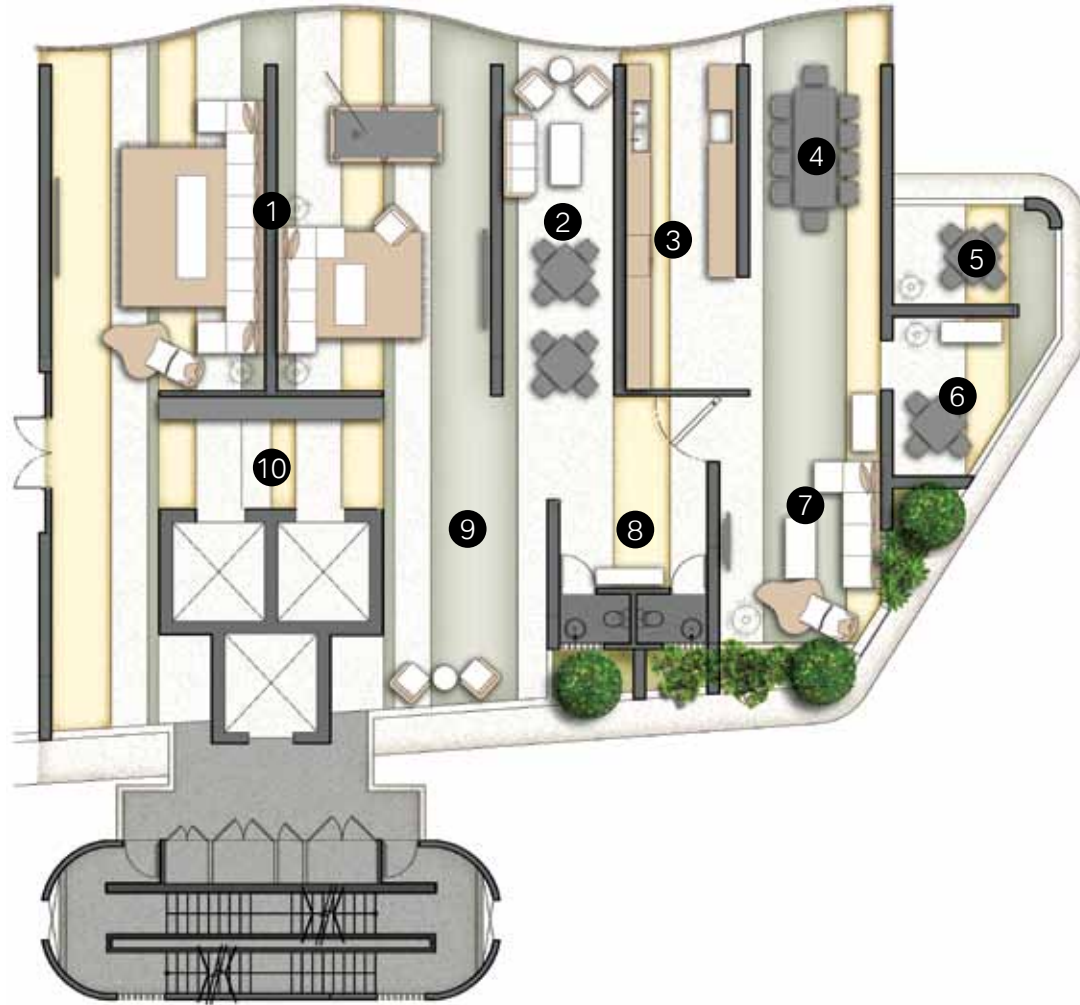
Fifth Floor Plan



Club Floor Lifestyle Facilities Zone

1. Olympic Sized Infinity Pool
2. Children's Play Pool
3. Cabana Villas
4. Raised Pool Deck
5. Designer Feature Pond
6. Lifestyle Concierge Lounge
7. Management Office
8. Changing Room
9. Uber Glass Function Room
10. Timber Platform Deck
11. Children's Playground
12. BBQ Function Pad

Thirteenth Floor Plan

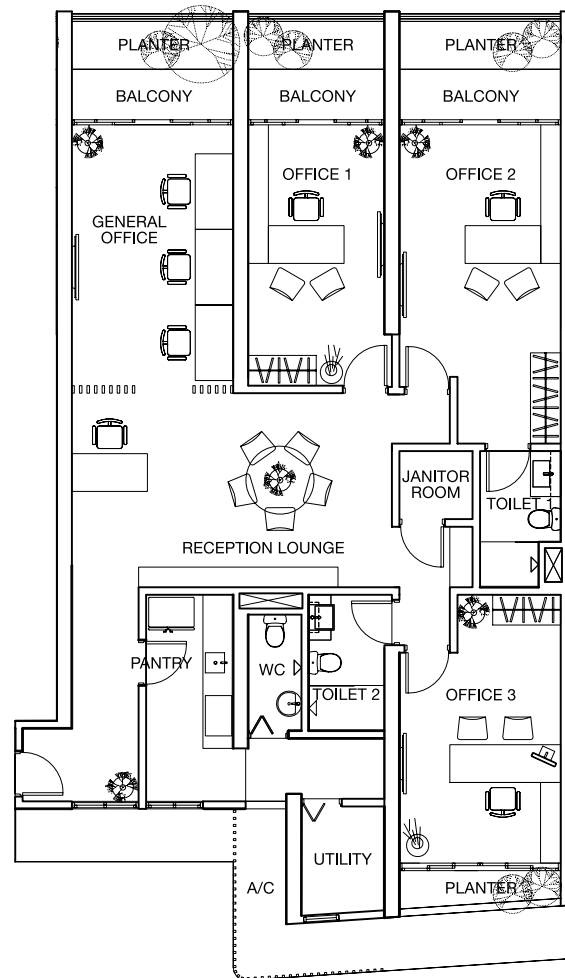
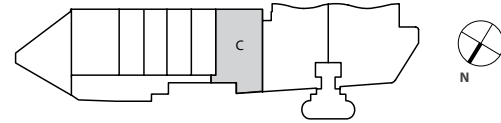


Club Lounge

1. Sky Lounge
2. Discussion Lounge
3. Private Dining Kitchen
4. Gourmet Dining
5. Private Games Room
6. Private Card Room
7. Entertainment Suite
8. Powder Room
9. Reception Lounge
10. Reception Lobby

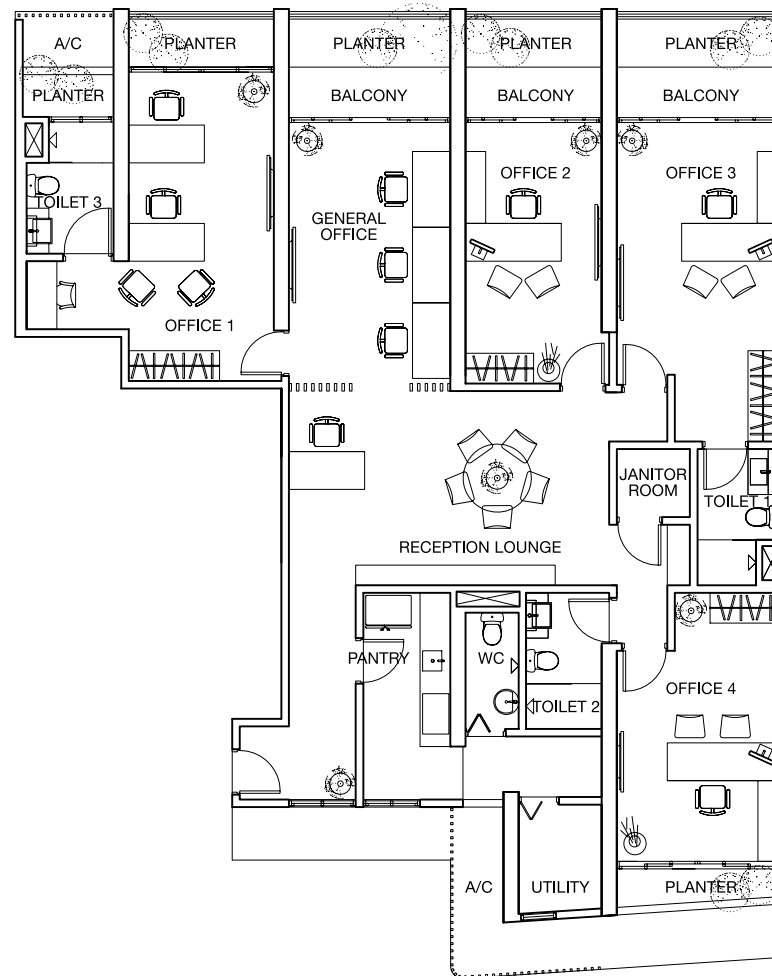
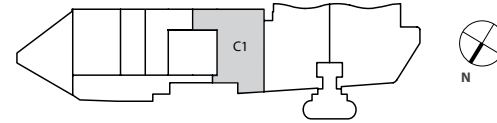
Urban Suites Type C

Gross Floor Area 1899 sq. ft.*



*inclusive of planters and air conditioning ledge

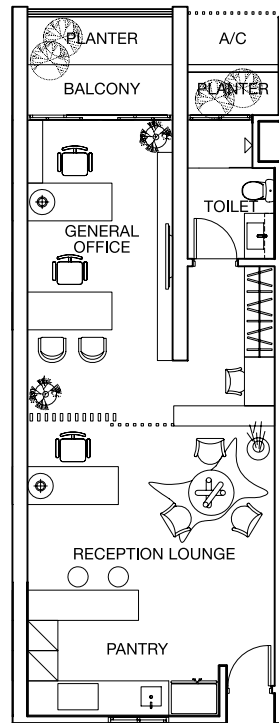
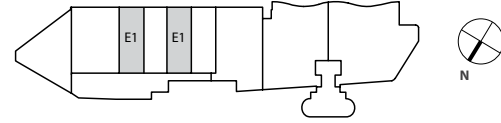
Urban Suites Type C1
Gross Floor Area 2291 sq. ft.*



*inclusive of planters and air conditioning ledges

Designer Suites Type E1

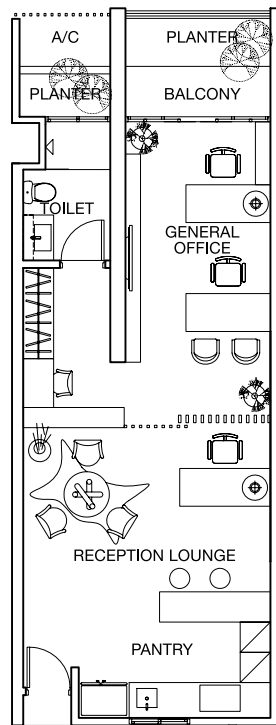
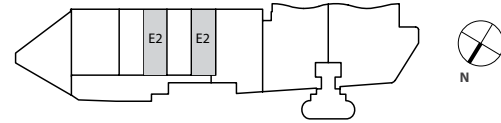
Gross Floor Area 799 sq. ft.*



*inclusive of planters and air conditioning ledge

Designer Suites Type E2

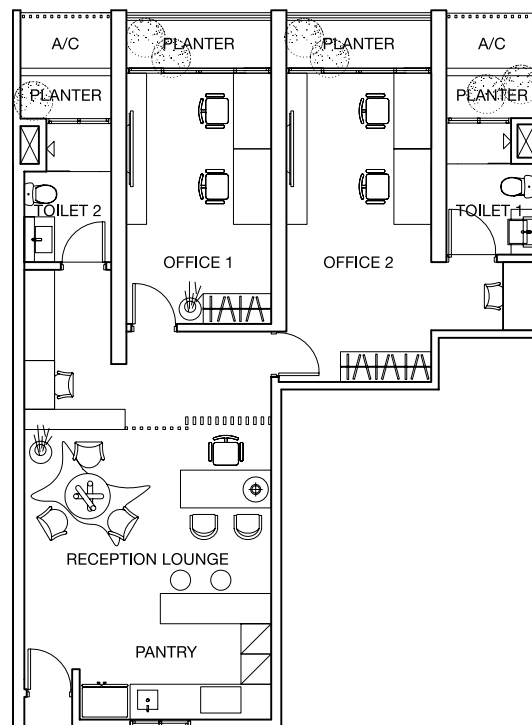
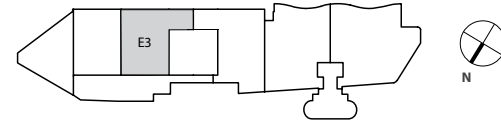
Gross Floor Area 799 sq. ft.*



*inclusive of planters and air conditioning ledge

Designer Suites Type E3

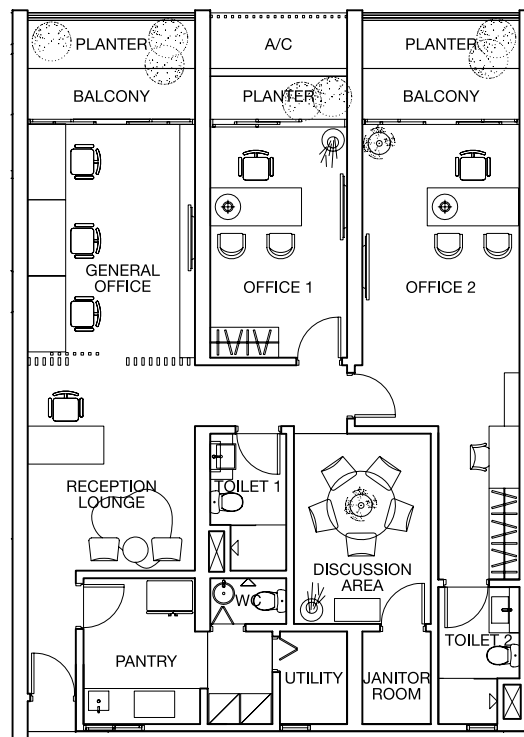
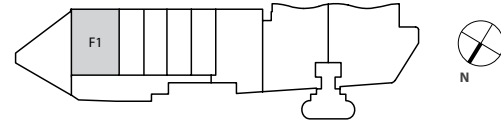
Gross Floor Area 1195 sq. ft.



*inclusive of planters and air conditioning ledges

Sky Suites Type F

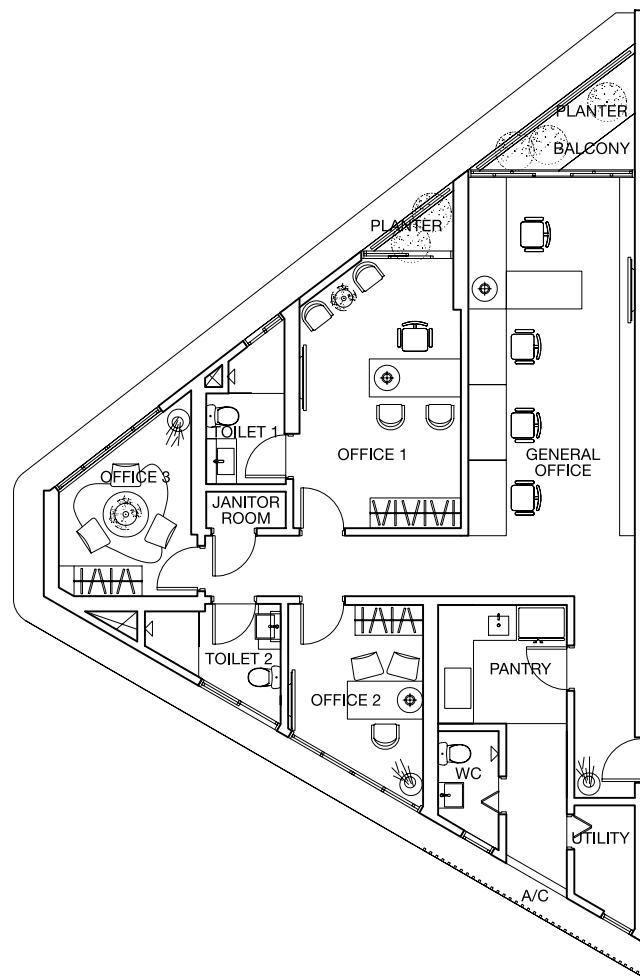
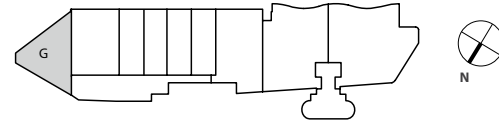
Gross Floor Area 1527 sq. ft.*



*inclusive of planters and air conditioning ledge

Sky Pad Type G

Gross Floor Area 1302 sq. ft.*



*inclusive of planters and air conditioning ledge

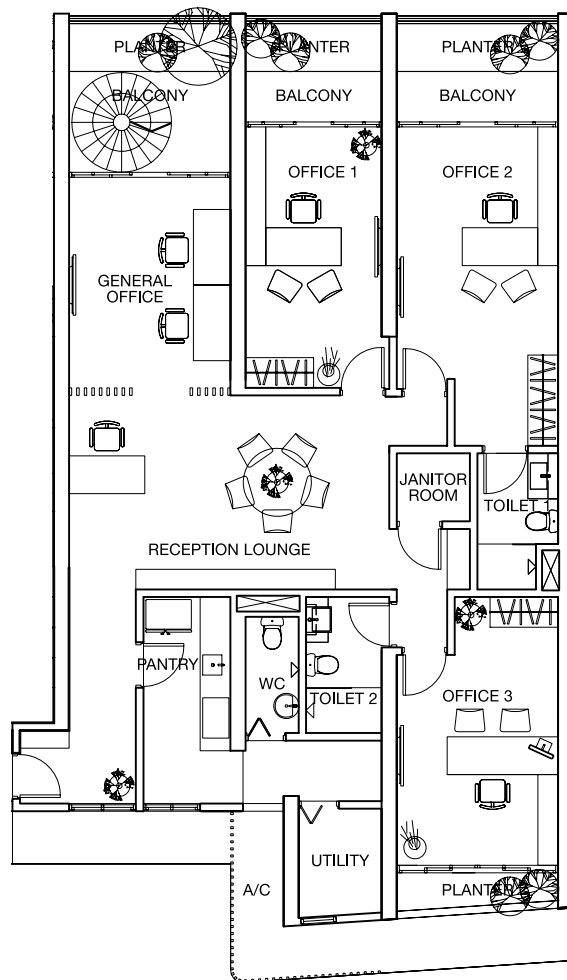
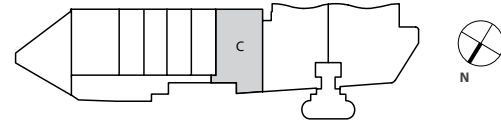
Corporate Suites Type C / C1 / E1 / E2 / E3 / F / G

Specifications

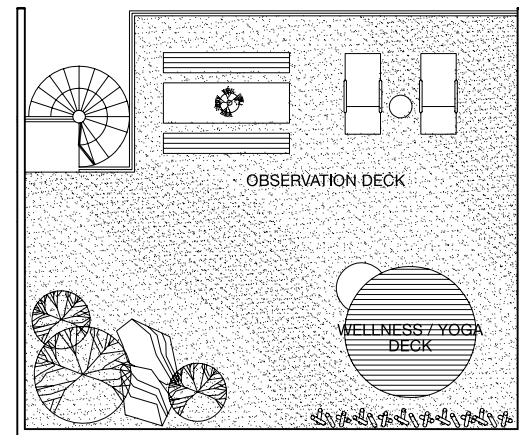
Structure	Reinforced Concrete	
Wall	Clay Bricks And / Or Hollow Core Blocks	
Ceiling	Dry Area	Fibrous Plaster Board And / Or Skim Coat With Paint Finish
	Wet Area	Water Resistant Board And / Or Skim Coat With Paint Finish
Window	Aluminium Frame Windows	
Doors	Main Entrance	Solid Timber Framed Door With Veneer Or Paint Finish
	Internal	Hollow Core Timber Framed Flush Door With Paint Finish
	Balcony	Aluminium Framed Sliding Glass Door
	Janitor Room	Hollow Core Timber Framed Flush Door With Paint Finish
	Utility	Aluminium Framed Acrylic Bi-Fold Door
	WC	PVC Bi-Fold Door
Locks & Ironmongeries	Quality Locksets, Hinges And Handles To All Doors	
Floor Finish	General Office / Reception Lounge	Selected Homogeneous Tiles
	Office(s)	Selected Timber Flooring
	Discussion Area	Selected Timber Flooring
	Toilets	Selected Homogeneous Tiles
	Pantry	Selected Homogeneous Tiles
	Balcony	Selected Pebble Wash
	Utility / WC	Selected Ceramic Tiles
	Janitor Room	Cement Screed
Wall Finish	General	Skim Coat And / Or Plaster And Paint
	General Office / Reception Lounge	Plaster And Paint
	Office(s)	Plaster And Paint
	Discussion Area	Plaster And Paint
	Toilets	Selected Homogeneous Tiles
	Pantry	Plaster And Paint
	Balcony	Plaster And Paint
	Janitor Room	Plaster And Paint
Utility / WC	Plaster And Paint And / Or Selected Ceramic Tiles	
Sanitary Wares & Fittings	Quality Sanitary Wares, Fittings And Accessories Comprising Of Water Closet, Mixer, Wash Basin, Shower Mixer And Handheld Shower	
Pantry Cabinet & Appliances	Pantry Cabinets	Quality Cabinets And Counters With Sink Base Unit, Storage Drawers And Wall Unit
	Pantry Appliances	Imported Quality Gas Hob, Canopy Hood And Built-In Oven
Cabinets	Quality Cabinet Fixtures To All Offices	
Air-Conditioning	General Office / Reception Lounge, Discussion Area And Offices	
Intercom / Security System	Video Intercom System	
TV / Cable TV Infrastructure	TV / Cable TV Points To General Office, Discussion Area And Offices (Service Connection Fee, Annual Fee, Subscription Fee, If Any, Shall Be Borne By Purchaser)	
Telephone And Internet Access Infrastructure	Telephone And Internet Access Points To General Office, And Offices (Except Type E1 & E2 – General Office And Reception Lounge)	
Turfing	To Selected Garden Areas Only (For Penthouse Unit Only)	

Urban Duplex Penthouse C

Gross Floor Area 2731 sq. ft.*



Penthouse Level One

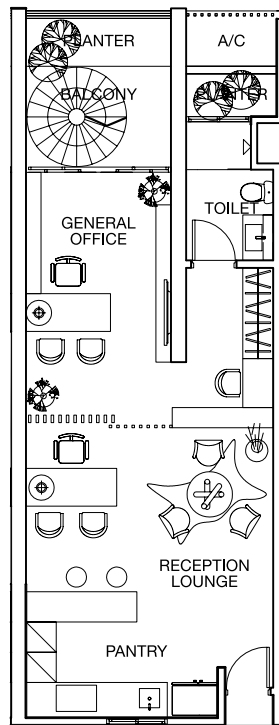
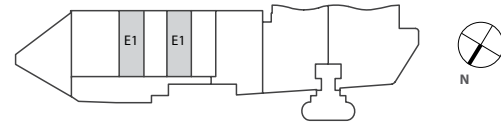


Penthouse Level Two

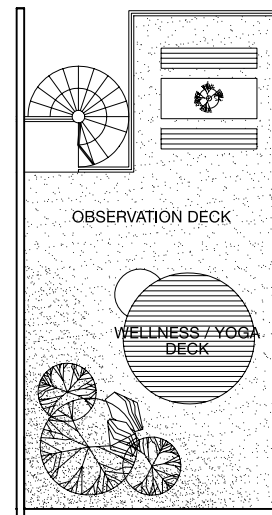
*inclusive of planters and air conditioning ledge

Designer Loft Penthouse E1

Gross Floor Area 1290 sq. ft.*



Penthouse Level One

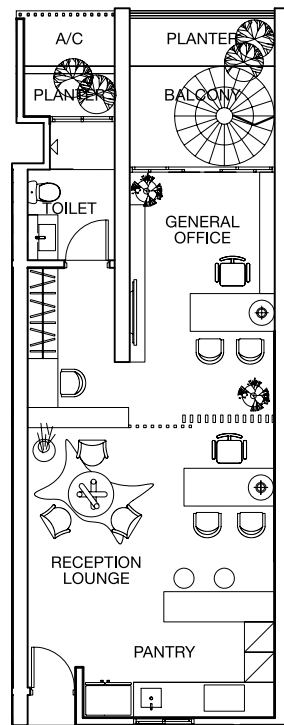
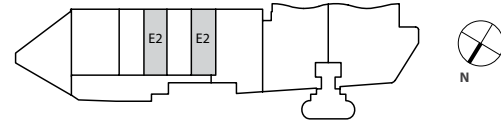


Penthouse Level Two

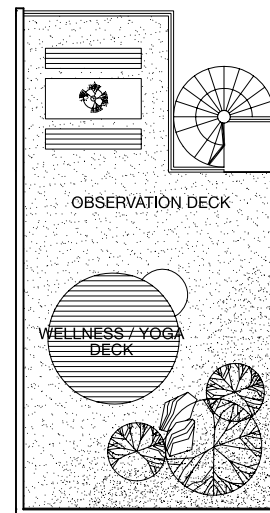
*inclusive of planters and air conditioning ledge

Designer Loft Penthouse E2

Gross Floor Area 1290 sq. ft.*



Penthouse Level One

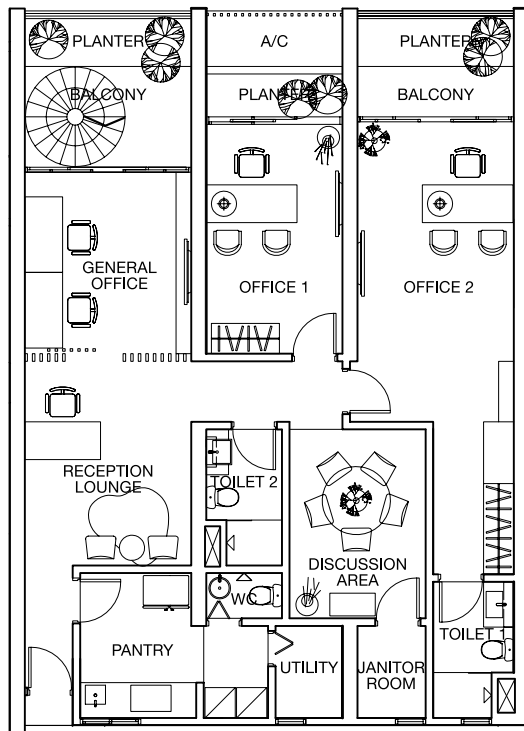
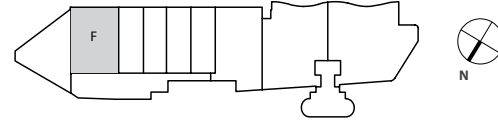


Penthouse Level Two

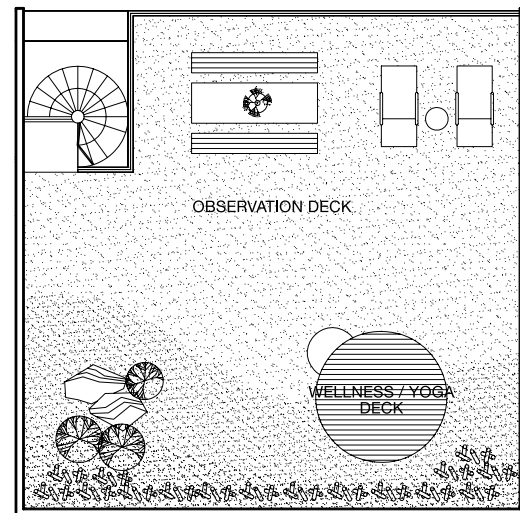
*inclusive of planters and air conditioning ledge

Uber Loft Penthouse F

Gross Floor Area 2529 sq. ft.*



Penthouse Level One

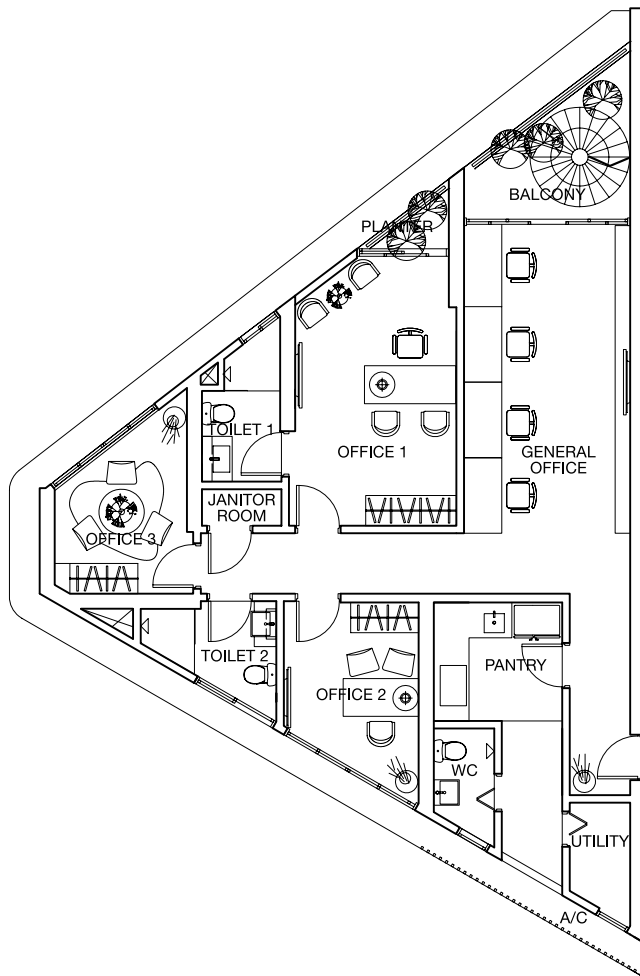
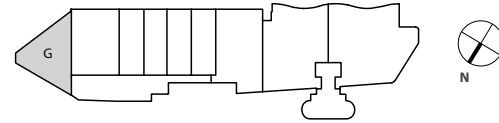


Penthouse Level Two

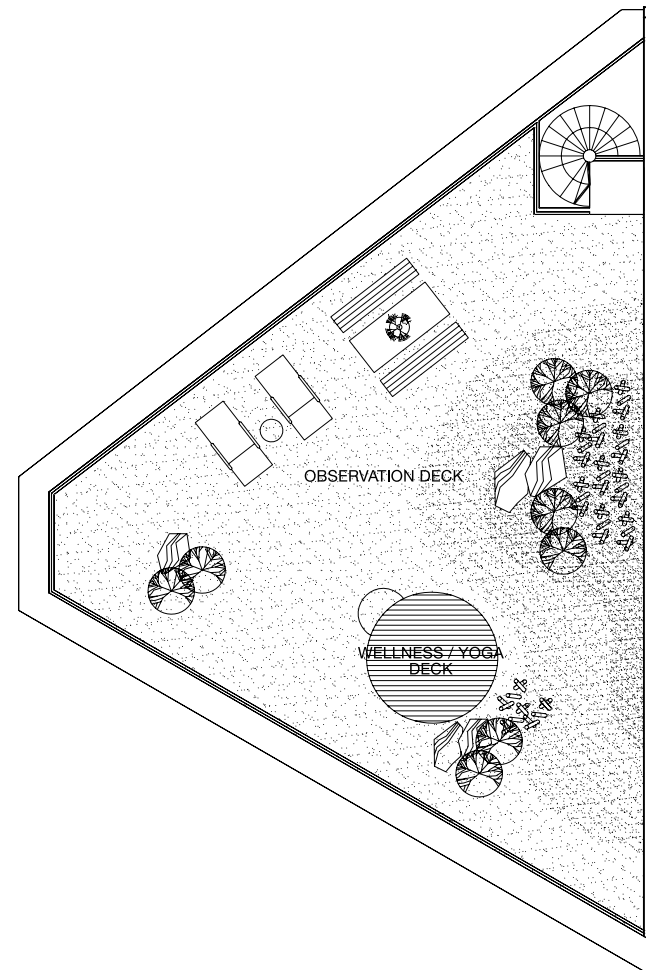
*inclusive of planters and air conditioning ledge

Master Duplex Penthouse G

Gross Floor Area 2503 sq. ft.*



Penthouse Level One



Penthouse Level Two

*inclusive of planters and air conditioning ledge

Corporate Penthouse Type C / E1 / E2 / F / G

Structure	Reinforced Concrete
------------------	---------------------

Wall	Clay Bricks And / Or Hollow Core Blocks
-------------	---

Ceiling	Dry Area	Fibrous Plaster Board And / Or Skim Coat With Paint Finish
	Wet Area	Water Resistant Board And / Or Skim Coat With Paint Finish

Window	Aluminium Frame Windows
---------------	-------------------------

Doors	Main Entrance	Solid Timber Framed Door With Veneer Or Paint Finish
	Internal	Hollow Core Timber Framed Flush Door With Paint Finish
	Balcony	Aluminium Framed Sliding Glass Door
	Janitor Room	Hollow Core Timber Framed Flush Door With Paint Finish
	Utility	Aluminium Framed Acrylic Bi-Fold Door
	WC	PVC Bi-Fold Door

Locks & Ironmongeries	Quality Locksets, Hinges And Handles To All Doors
----------------------------------	---

Floor Finish	General Office	Selected Timber Flooring
	Office(s)	Selected Timber Flooring
	Discussion Area	Selected Timber Flooring
	Toilets	Selected Stone And / Or Recon Stone
	Pantry	Selected Homogeneous Tiles (Except E1 & E2; Selected Timber Flooring)
	Balcony	Selected Pebble Wash
	Roof Terrace	Selected Pebble Wash And / Or Turfing
	Utility / WC	Selected Ceramic Tiles
	Janitor Room	Cement Screed
	Staircase	Selected Timber Flooring

Wall Finish	General	Skim Coat And / Or Plaster And Paint
	General Office / Reception Lounge	Plaster And Paint
	Office(s)	Plaster And Paint
	Discussion Area	Plaster And Paint
	Toilets	Selected Stone And / Or Recon Stone
	Pantry	Plaster And Paint
	Balcony	Plaster And Paint
	Roof Terrace	Plaster And Paint
	Janitor Room	Plaster And Paint
	Utility / WC	Plaster And Paint And / Or Selected Ceramic Tiles

Sanitary Wares & Fittings	Quality Sanitary Wares, Fittings And Accessories Comprising Of Water Closet, Mixer, Wash Basin, Shower Mixer And Handheld Shower
--------------------------------------	--

Pantry Cabinet & Appliances	Pantry Cabinets	Quality Cabinets And Counters With Sink Base Unit, Storage Drawers And Wall Unit
	Pantry Appliances	Imported Quality Gas Hob, Canopy Hood And Built-In Oven

Cabinets	Quality Cabinet Fixtures To All Offices
-----------------	---

Air-Conditioning	General Office / Reception Lounge, Discussion Area And Offices
-------------------------	--

Intercom / Security System	Video Intercom System
-----------------------------------	-----------------------

TV / Cable TV Infrastructure	TV / Cable TV Points To General Office, Discussion Area And Offices (Service Connection Fee, Annual Fee, Subscription Fee, If Any, Shall Be Borne By Purchaser)
-------------------------------------	---

Telephone And Internet Access Infrastructure	Telephone And Internet Access Points To General Office And Offices (Except Type E1 & E2 – General Office And Reception Lounge)
---	--

Turfing	To Selected Garden Areas Only (For Penthouse Unit Only)
----------------	---

Upcoming Projects

Ski Resort and Residences in Niseko, Japan



Set across a sprawling 32 acre private estate, The Retreat by Katana boasts of an extensive river frontage and a great view of Mount Yotei.

The integrated ski resort masterplan will consist of a unique mix of boutique hotel suites, designer apartments and exclusive private villas.

Debuting 2nd Quarter of 2013

Upcoming Projects

High Rise Condotel in Phnom Penh, Cambodia

Located in downtown Phnom Penh, this niche, design driven business condotel boasts only 129 rooms. It will also feature a hip duplex restaurant and a trendy rooftop bar. Driven by the motivation to set a trend of hip condotels in Phnom Penh, this marks Katana's first foray into the urban hospitality industry.

Debuting 4th Quarter of 2012



Completed Projects

The Katana Residences, Kuala Lumpur, Malaysia



The Katana Residences - an award winning project for architecture and the debut project for Katana Developments.

Designed to introduce innovative habitat concepts to the Malaysian capital, The Katana Residences comprises 24 industrial Loft Duplexes and 6 Super Triplex Penthouses each with their own private plunge pools. The project boasts of an architectural foundation that uses 3 dimensional interlocking modules, which is a landmark concept for Malaysia.



Completed Projects

Katana II, Kuala Lumpur, Malaysia



Katana II offers contemporary living at its finest, subtly infused with the essence of the tropics. Exceedingly well designed, each is an exquisite example of space and privacy in perfect harmony. Conventional boundaries cease to exist as you move with ease between generous-sized living areas that seamlessly flow from one to the next, creating spaces for intimacy and entertainment. Landscaped gardens and architectural ponds blossom within living spaces that open onto outdoor pavilions and terraces framed by panoramic views.



Developed by

KATANA
THE DESIGNER LUXURY

Katana Developments (The Landmark) Sdn Bhd (983400-W)
75 Bukit Timah Road
Suite 03-06 Boon Siew Building
Singapore 229833

t + 65 6338 1848
f + 65 6338 9842
e talktokatana@katanadevelopments.com
w www.katanadevelopments.com

In collaboration with

BSG | Property

Boon Siew Sdn Bhd (3127-T)
25-B Lebuhr Farquhar
10200 Penang
Malaysia

t + 604 263 7888
f + 604 261 6985
e customercare@bsg.com.my
w www.bsgproperty.com

www.thelandmarkpenang.com

DISCLAIMER

While every reasonable care has been taken in preparing this brochure and in constructing the models and show unit, the Developer and the Marketing Agents cannot be held responsible for any inaccuracies or omissions. Visual representations, models, show flat displays and illustrations, photographs, art renderings and other graphic representations and references are intended to portray only artist's impressions of the development and cannot be regarded as representations of fact.

All information, specifications, renderings, visual representations and plans are correct at the time of publication and are subject to change and deviations as may be required by us and / or the competent authorities and shall not form part of any offer or contract nor constitute any warranty by us and shall not be regarded as statements or representation of fact. All areas are approximate measurements only and subject to final survey. The Sale and Purchase Agreement shall form the entire agreement between us as the Developer and the Purchaser and shall supersede all statements representations or promises made prior to the signing of the Sale & Purchase Agreement and shall in no way be modified by any statements, representations or promises made by us or the Marketing Agents.

